



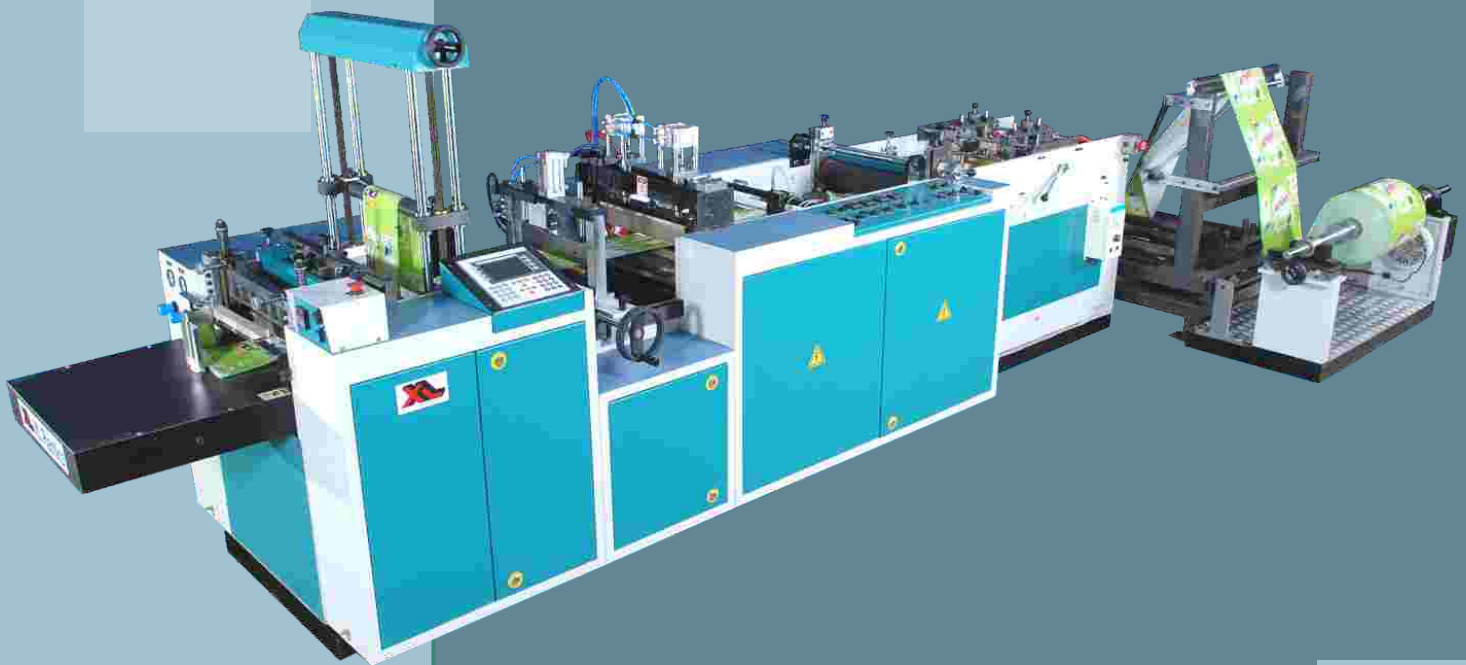
XL Plastics
Converting Machinery

DELTA Series Servo Driven

DELTA Series Servo Driven

- High Speed up to 150 strokes/min.
- Servo Motor for Indexing and Accuracy
- Microprocessor Controlled with Digital Display
- Keypad Setting for Speed, Size & Count
- Backlit Display for Operating Parameters
- Horizontal Unwind Stand with Sheet Folding Unit
- Two Continuous Longitudinal Sealing Heads
- One Set Mechanically Reciprocating Cross Sealing Jaw
- Cross Sealer Retracts Pneumatically when Machine Stops
- Particle Brake on Unwind with Semi-Automatic Tension Controller

Three Side Seal Pouch Making Machine



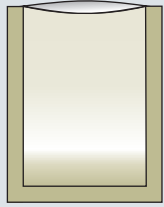
150
strokes/min.

SSP 350 DELTA

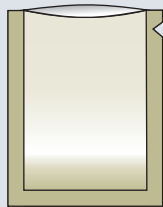
Suitable for
Laminated Film
PET-PE, BOPP-PE

Models:
SSP 250 DELTA
SSP 350 DELTA
SSP 450 DELTA

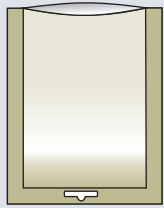
Types of Pouches Possible :



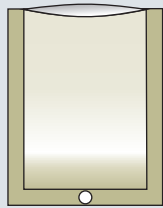
Standard Pouch



V Notch



Euro Punch



Hole Punch

Features :

DELTA Series Servo Driven

- High Speed up to 150 strokes/min.
- Servo Motor for Indexing and Accuracy
- Microprocessor Controlled with Digital Display
- Keypad Setting for Speed, Size & Count
- Backlit Display for Operating Parameters
- Horizontal Unwind Stand with Sheet Folding Unit
- Two Continuous Longitudinal Sealing Heads
- One Set Mechanically Reciprocating Cross Sealing Jaw
- Cross Sealer Retracts Pneumatically when Machine Stops
- Particle Brake on Unwind with Semi-Automatic Tension Controller

Recommended Attachments :

- Edge Guiding System (EPC) on Unwind
- Auto Tension Control System with Load Cell & Particle Brake

Optional Attachments :

- Pneumatic Cooling Station for Cross Seal
- Pneumatic Euro Punch
- Pneumatic Hole Punch
- Pneumatic V Notch
- Pneumatic Agarbatti Perforation With Programmable Cutting

Specifications

Model	Max. Web Width mm	Max. Pouch Size mm	Max. Speed Strokes/min	Connected Load KW	Approx. Weight Kg	Dimensions W x L x H cm
SSP 250 DELTA	520	250 x 320	150	6.5	1450	132 x 533 x 183
SSP 350 DELTA	720	350 x 420	150	7.5	1650	146 x 533 x 163
SSP 450 DELTA	920	450 x 520	130	8.5	1850	164 x 533 x 183

Standard Supply Voltage: 415 V, 3 Phase & Neutral, 50 Hz
(Can be changed as per customers requirement)

Comp. Air Requirement : 5 Cfm.

The manufacturer reserves the right to change design/specifications because of continuous developments.

Accessories/Attachments shown on the photograph may not be part of the standard machine.

Max. Speed shown above is only indicative and the actual speed will depend on size, thickness and the materials of the film.

Compressed Air & Chilled Water, If Required, Not in our Scope of Supply.



XL Plastics

303/2 Makarpura Ind. Estate, Vadodara 390 010, INDIA
Tel : + 91-265-2638125, 2638026 • Fax : + 91-265-2638661
E-mail : info@xlplastics.com
Website : www.xlplastics.com